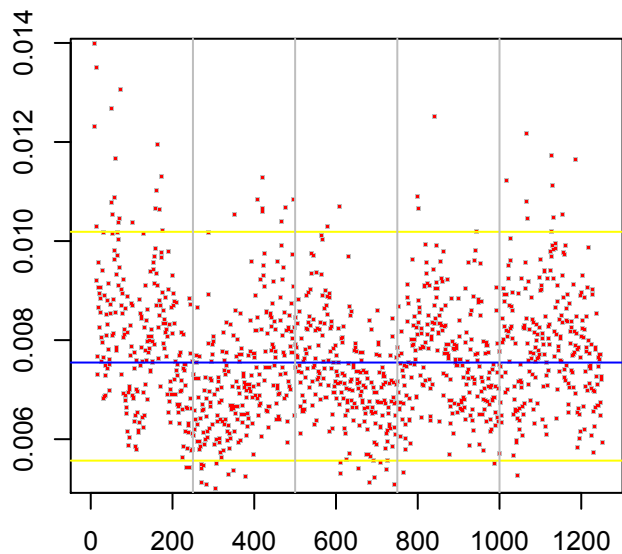


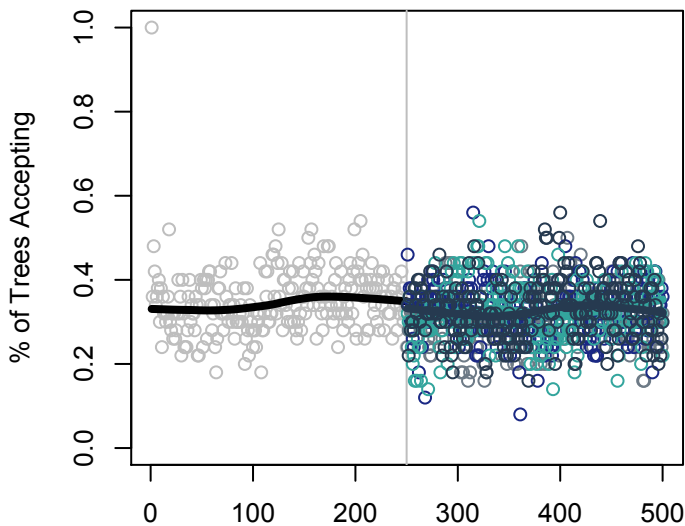
Sigsq by MCMC Iteration, avg after burn-in = 0.008

Sigsq Estimates over MCMC Iteration



MCMC Iteration (yellow lines: after burn-in 95% CI)

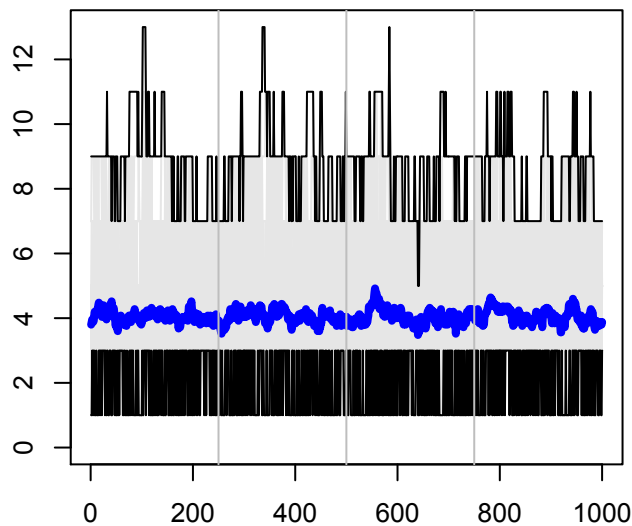
Percent Acceptance by MCMC Iteration



MCMC Iteration

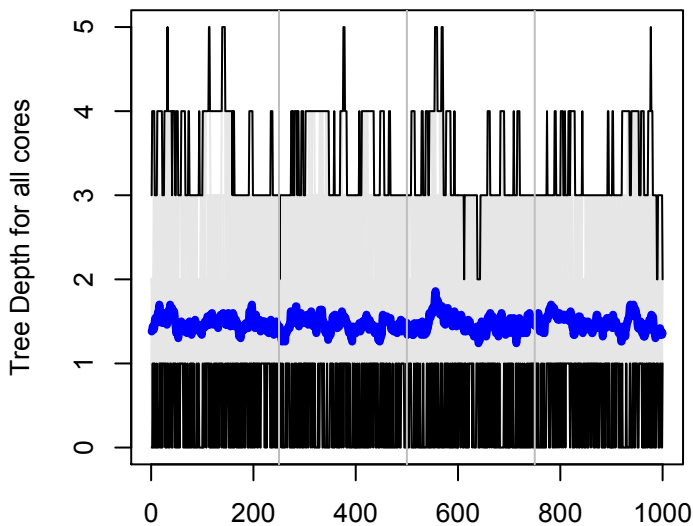
Tree Num Nodes And Leaves by MCMC Iteration After Burn-in

Tree Num Nodes and Leaves for all cores



MCMC Iteration

Tree Depth by MCMC Iteration After Burn-in



MCMC Iteration