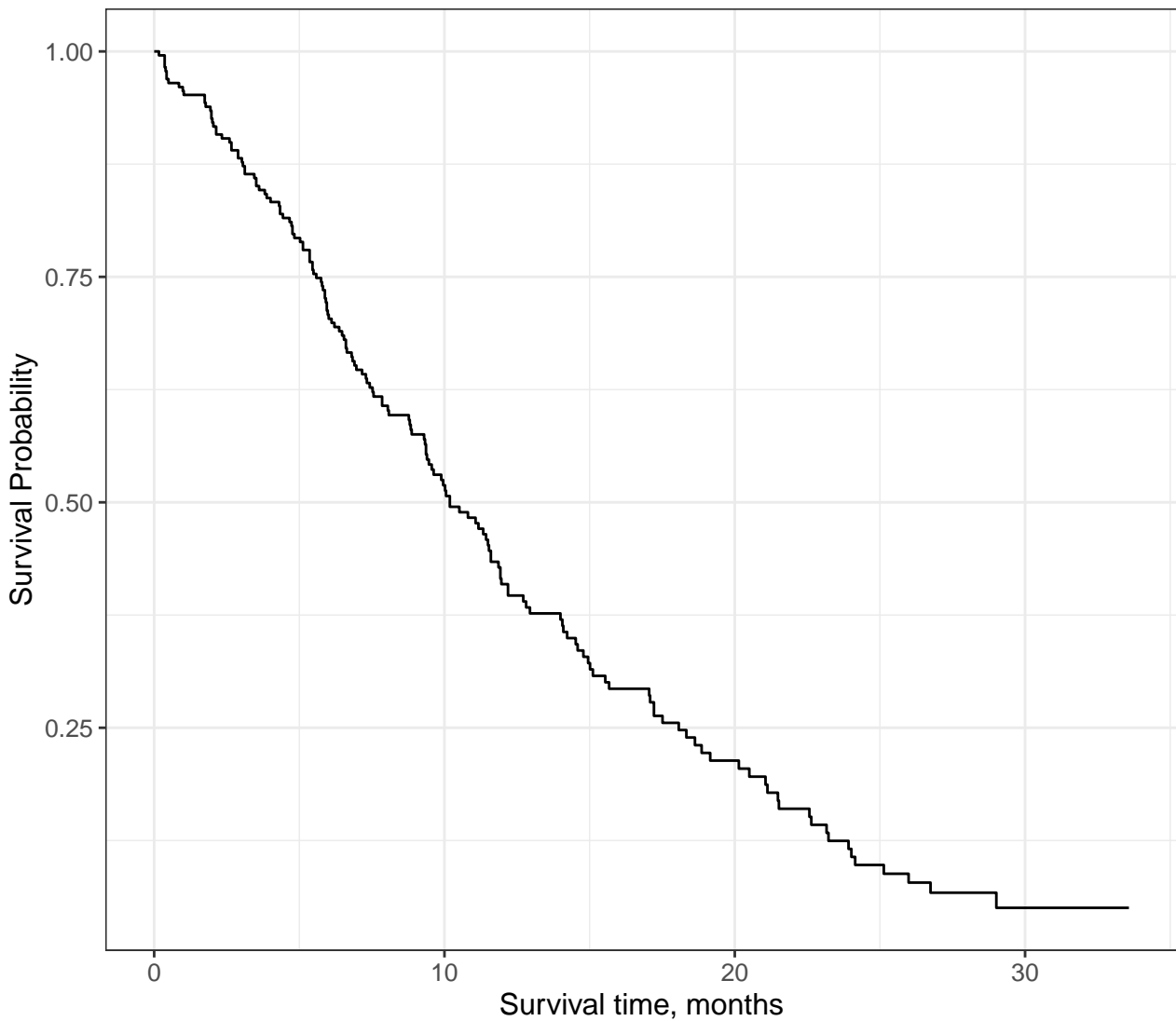
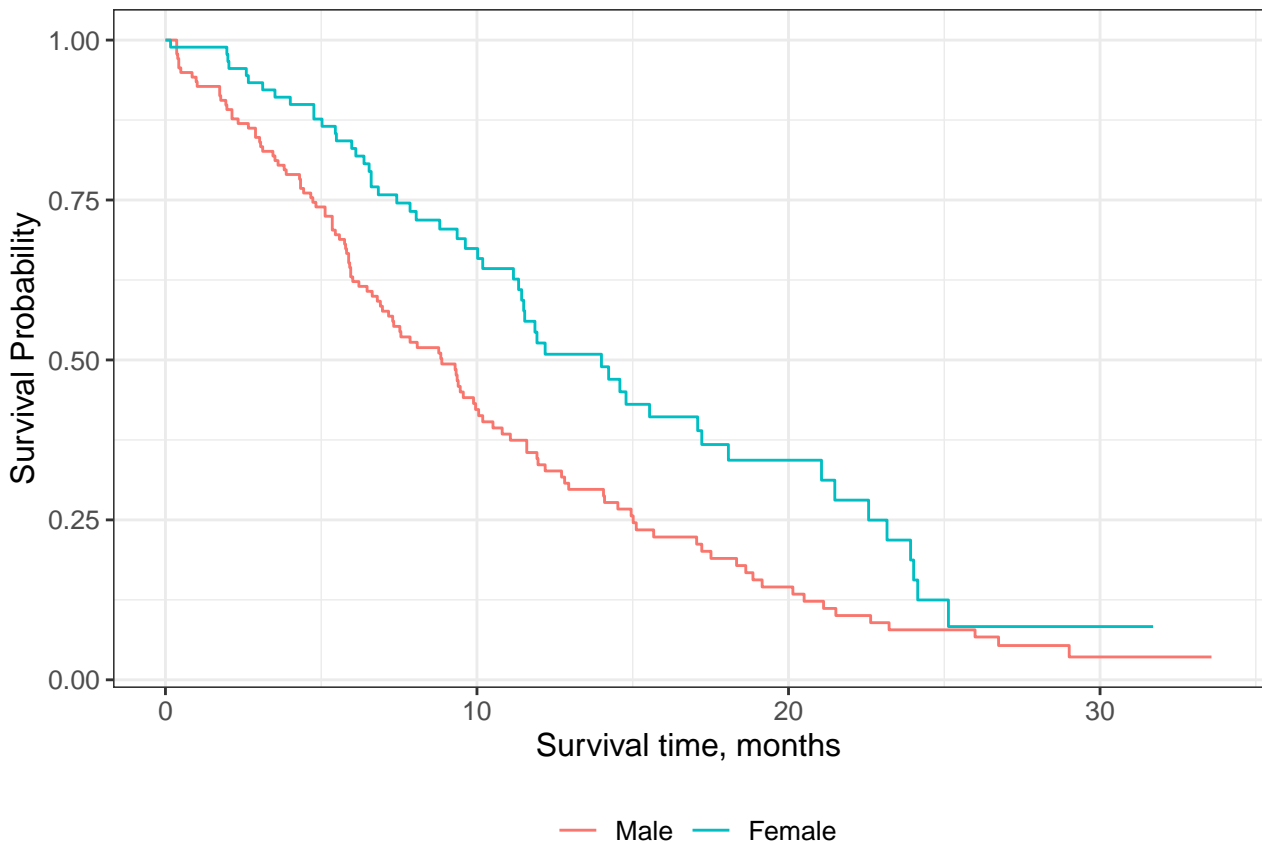


Asymptomatic  
 Asymptomatic and ambulatory  
 Male, In bed <50% of the day  
 Male, In bed > 50% of the day  
 Female, Asymptomatic  
 Female, Symptomatic and ambulatory  
 Female, Asymptomatic and ambulatory  
 Female, Symptomatic



At Risk	228	87	24	3
Events	0	103	148	165



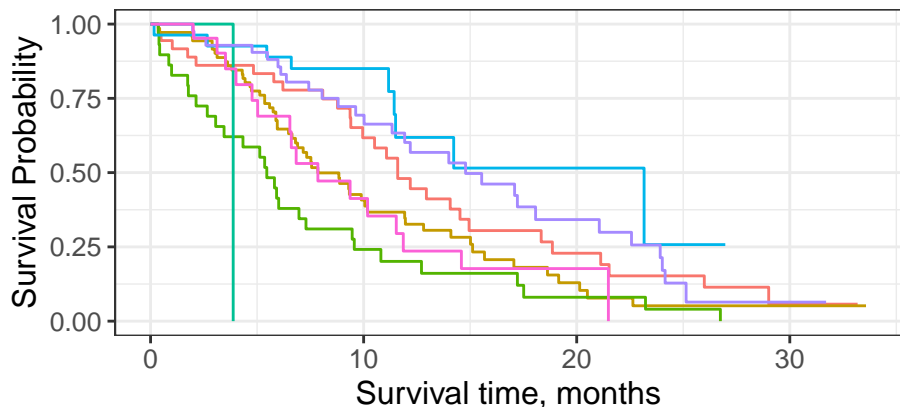
#### Male

At Risk	138	44	13	2
Events	0	76	103	112

#### Female

At Risk	90	43	11	1
Events	0	27	45	53





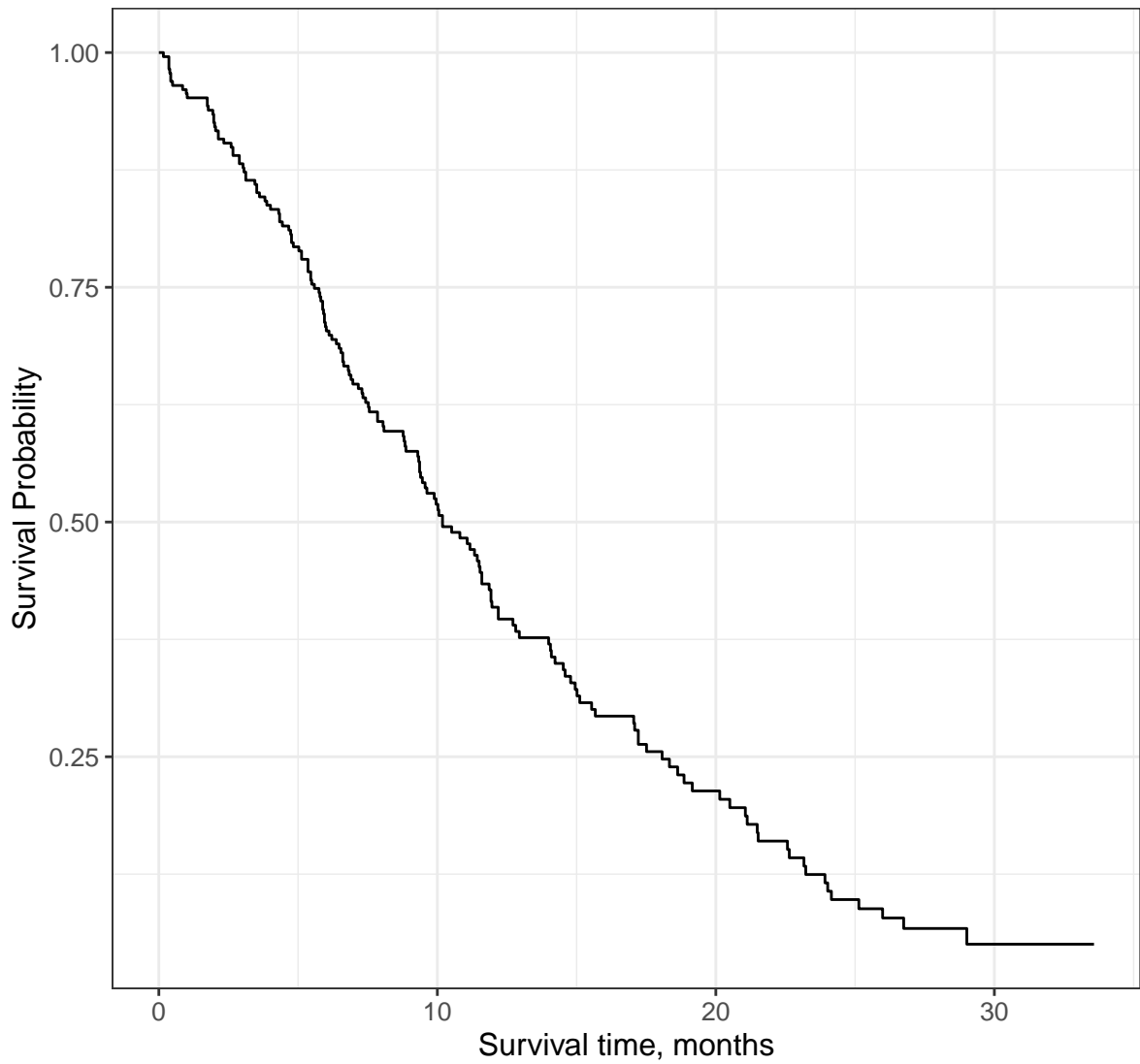
— Male, Asymptomatic     
 — Male, In bed <50% of the day     
 — Female, Asymptomatic  
— Male, Symptomatic and ambulatory     
 — Male, In bed > 50% of the day     
 — Female, Symptomatic and ambulatory

#### At Risk

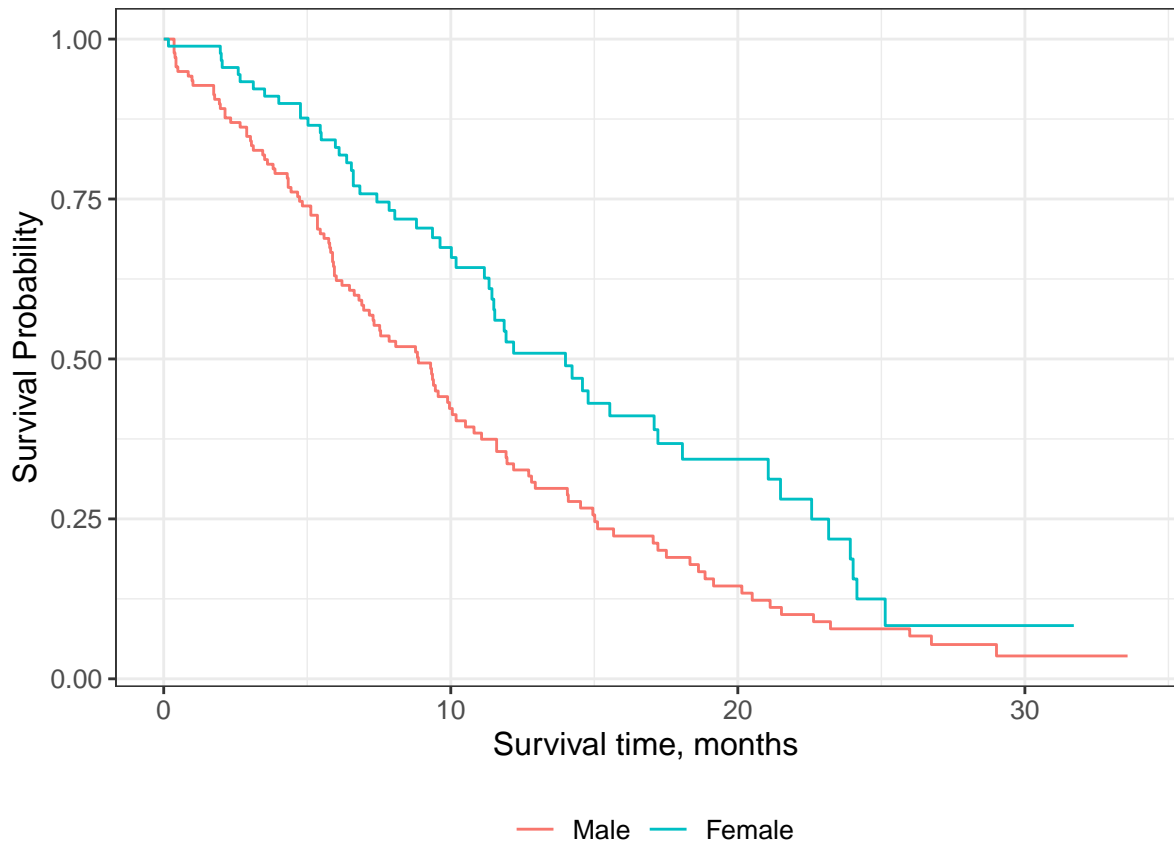
Male, Asymptomatic	36	18	6	1
Male, Symptomatic and ambulatory	71	20	5	1
Male, In bed <50% of the day	29	6	2	0
Male, In bed > 50% of the day	1	0	0	0
Female, Asymptomatic	27	13	2	0
Female, Symptomatic and ambulatory	42	23	8	1
Female, In bed <50% of the day	21	7	1	0

#### Events

Male, Asymptomatic	0	13	24	28
Male, Symptomatic and ambulatory	0	39	51	54
Male, In bed <50% of the day	0	22	26	28
Male, In bed > 50% of the day	0	1	1	1
Female, Asymptomatic	0	4	8	9
Female, Symptomatic and ambulatory	0	12	22	28
Female, In bed <50% of the day	0	11	15	16



At Risk	228	87	24	3
CUM EVENTS	0	103	148	165

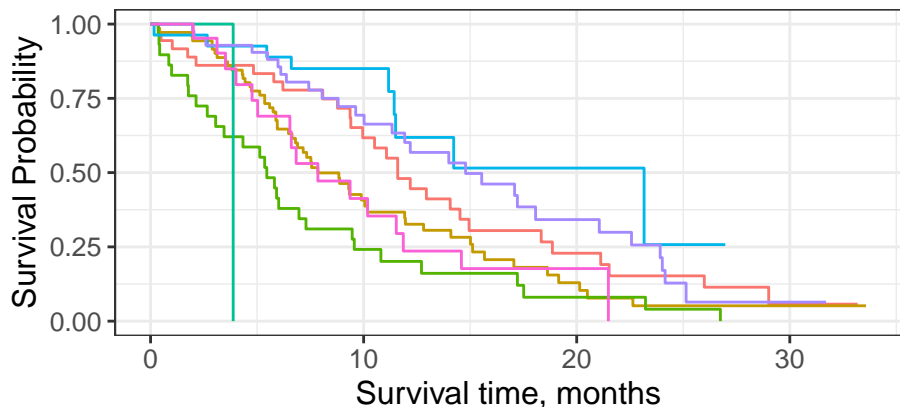


### Male

At Risk	138	44	13	2
CUM EVENTS	0	76	103	112

### Female

At Risk	90	43	11	1
CUM EVENTS	0	27	45	53



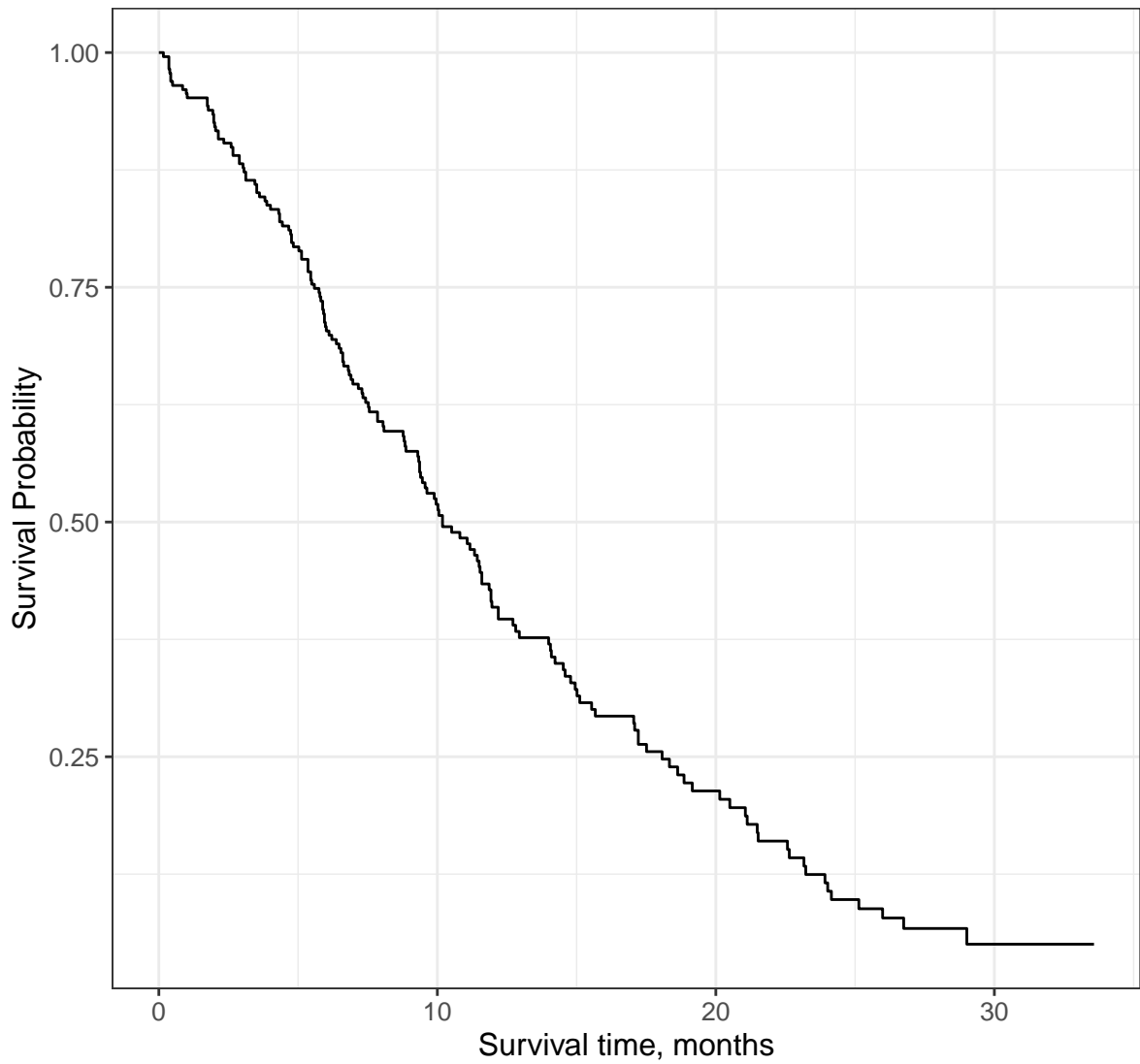
— Male, Asymptomatic     
 — Male, In bed <50% of the day     
 — Female, Asymptomatic  
— Male, Symptomatic and ambulatory     
 — Male, In bed > 50% of the day     
 — Female, Symptomatic and ambulatory

#### At Risk

Male, Asymptomatic	36	18	6	1
Male, Symptomatic and ambulatory	71	20	5	1
Male, In bed <50% of the day	29	6	2	0
Male, In bed > 50% of the day	1	0	0	0
Female, Asymptomatic	27	13	2	0
Female, Symptomatic and ambulatory	42	23	8	1
Female, In bed <50% of the day	21	7	1	0

#### CUM EVENTS

Male, Asymptomatic	0	13	24	28
Male, Symptomatic and ambulatory	0	39	51	54
Male, In bed <50% of the day	0	22	26	28
Male, In bed > 50% of the day	0	1	1	1
Female, Asymptomatic	0	4	8	9
Female, Symptomatic and ambulatory	0	12	22	28
Female, In bed <50% of the day	0	11	15	16



CUM EVENTS 228

87

24

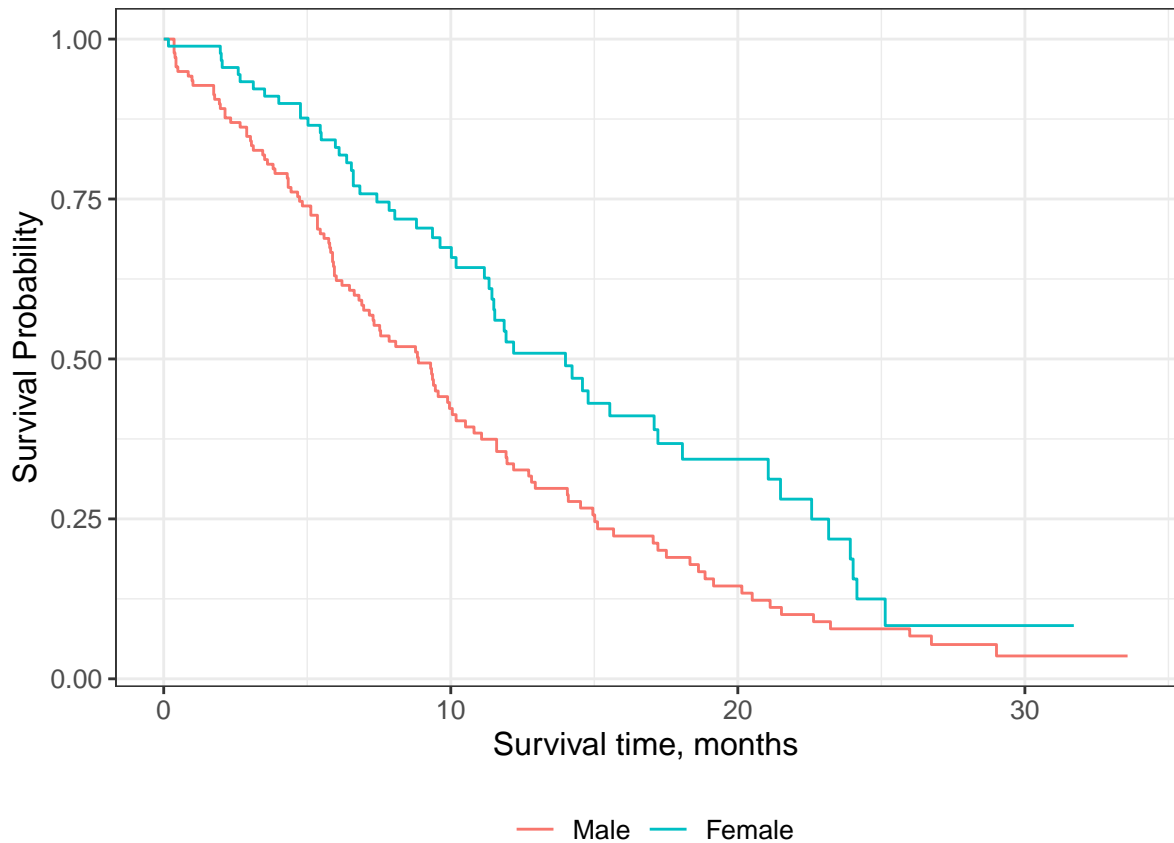
3

N RISK 0

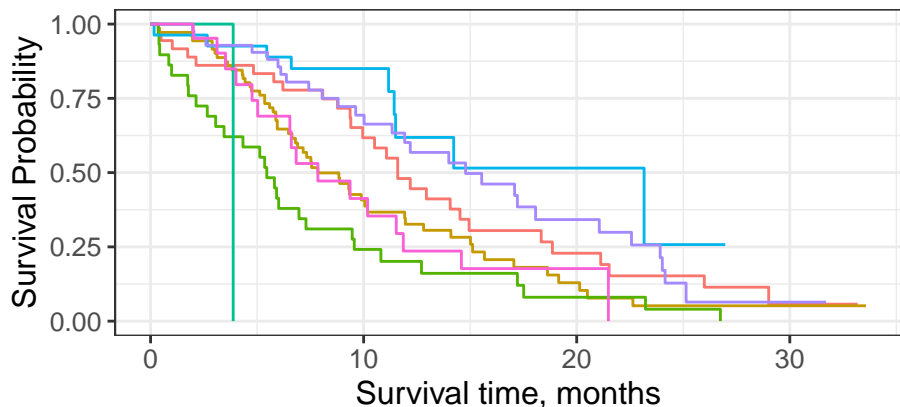
103

148

165



Male				
CUM EVENTS	138	44	13	2
N RISK	0	76	103	112
Female				
CUM EVENTS	90	43	11	1
N RISK	0	27	45	53



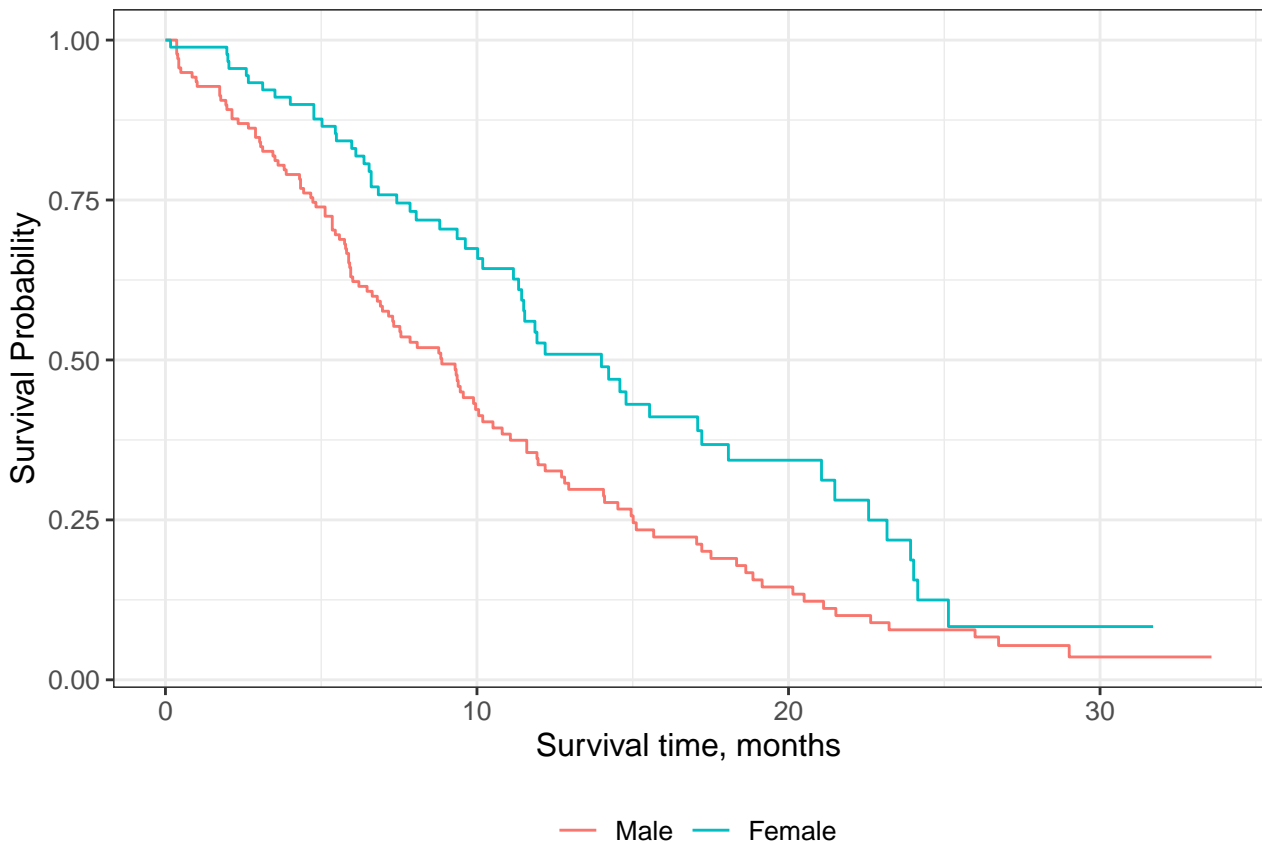
— Male, Asymptomatic     
 — Male, In bed <50% of the day     
 — Female, Asymptomatic  
— Male, Symptomatic and ambulatory     
 — Male, In bed > 50% of the day     
 — Female, Symptomatic and ambulatory

#### CUM EVENTS

Male, Asymptomatic	36	18	6	1
Male, Symptomatic and ambulatory	71	20	5	1
Male, In bed <50% of the day	29	6	2	0
Male, In bed > 50% of the day	1	0	0	0
Female, Asymptomatic	27	13	2	0
Female, Symptomatic and ambulatory	42	23	8	1
Female, In bed <50% of the day	21	7	1	0

#### N RISK

Male, Asymptomatic	0	13	24	28
Male, Symptomatic and ambulatory	0	39	51	54
Male, In bed <50% of the day	0	22	26	28
Male, In bed > 50% of the day	0	1	1	1
Female, Asymptomatic	0	4	8	9
Female, Symptomatic and ambulatory	0	12	22	28
Female, In bed <50% of the day	0	11	15	16



#### Male

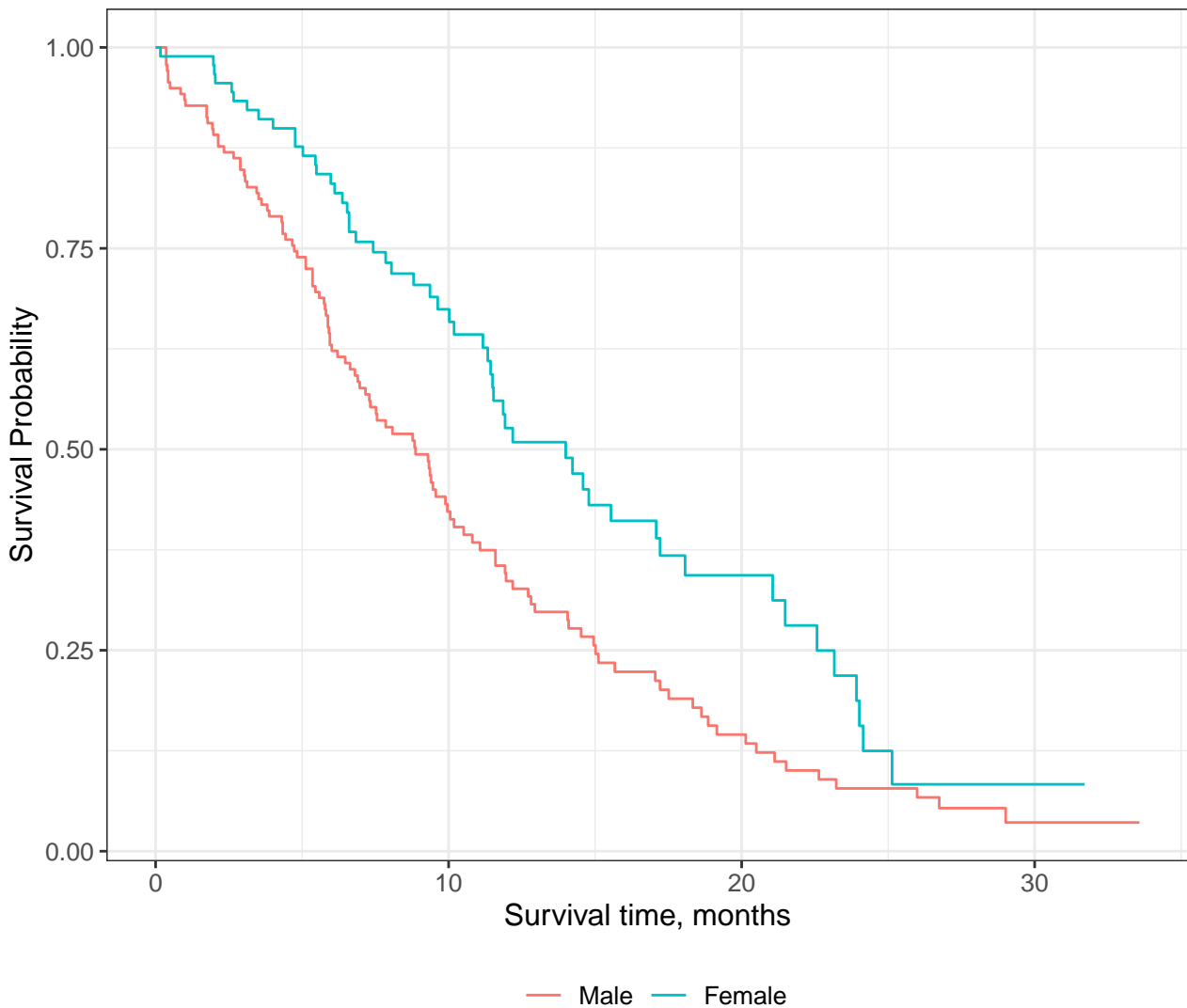
At Risk	138	44	13	2
Events	0	76	103	112

#### Female

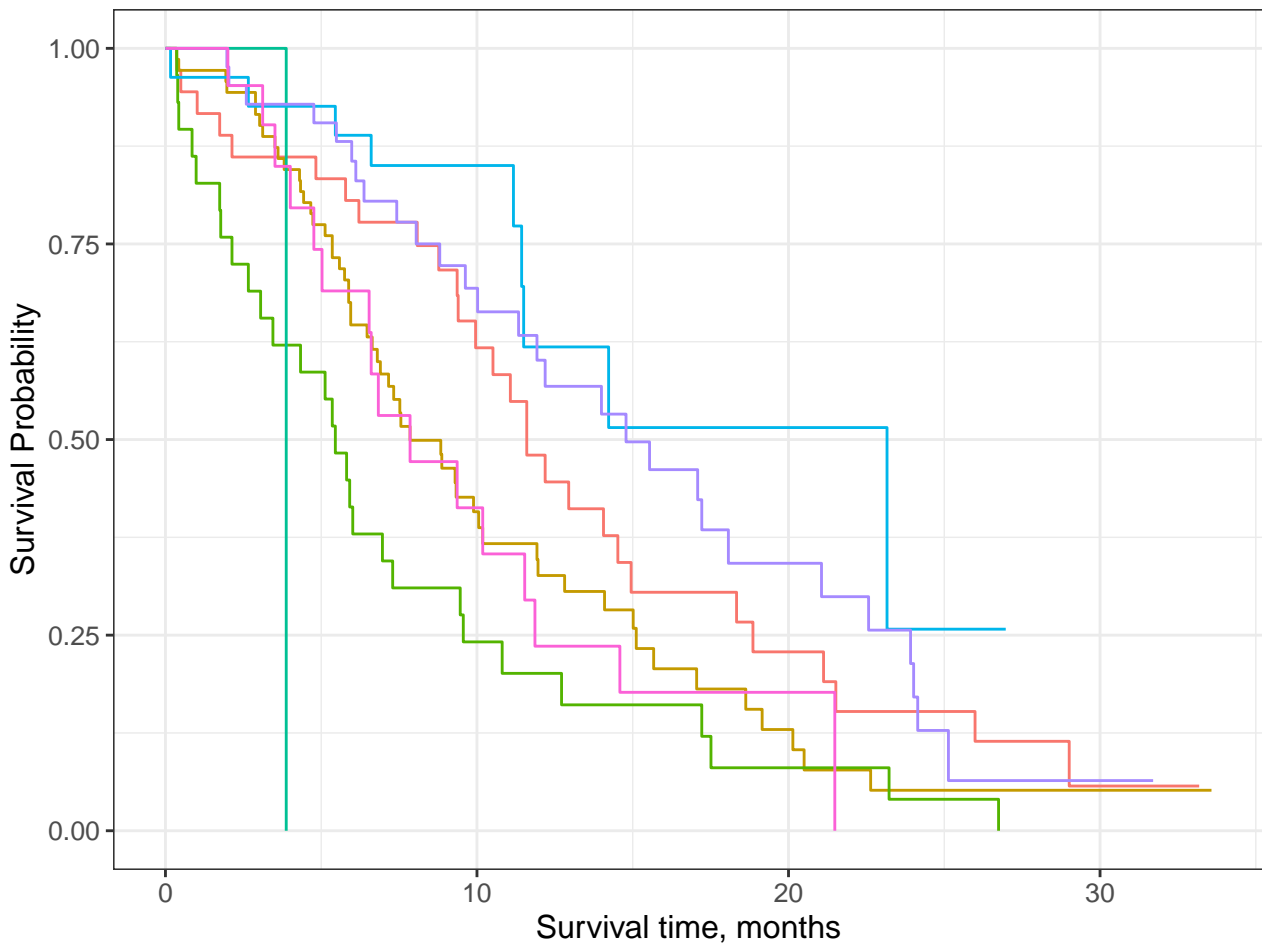
At Risk	90	43	11	1
Events	0	27	45	53



		Survival time, months			
		Male, In bed <50% of the day		Female, Asymptomatic	
Male, Asymptomatic					
At Risk	36	18	6	1	
Events	0	13	24	28	
Male, Symptomatic and ambulatory					
At Risk	71	20	5	1	
Events	0	39	51	54	
Male, In bed <50% of the day					
At Risk	29	6	2	0	
Events	0	22	26	28	
Male, In bed > 50% of the day					
At Risk	1	0	0	0	
Events	0	1	1	1	
Female, Asymptomatic					
At Risk	27	13	2	0	
Events	0	4	8	9	
Female, Symptomatic and ambulatory					
At Risk	42	23	8	1	
Events	0	12	22	28	
Female, In bed <50% of the day					
At Risk	21	7	1	0	
Events	0	11	15	16	



At Risk	228	87	24	3
Events	0	103	148	165



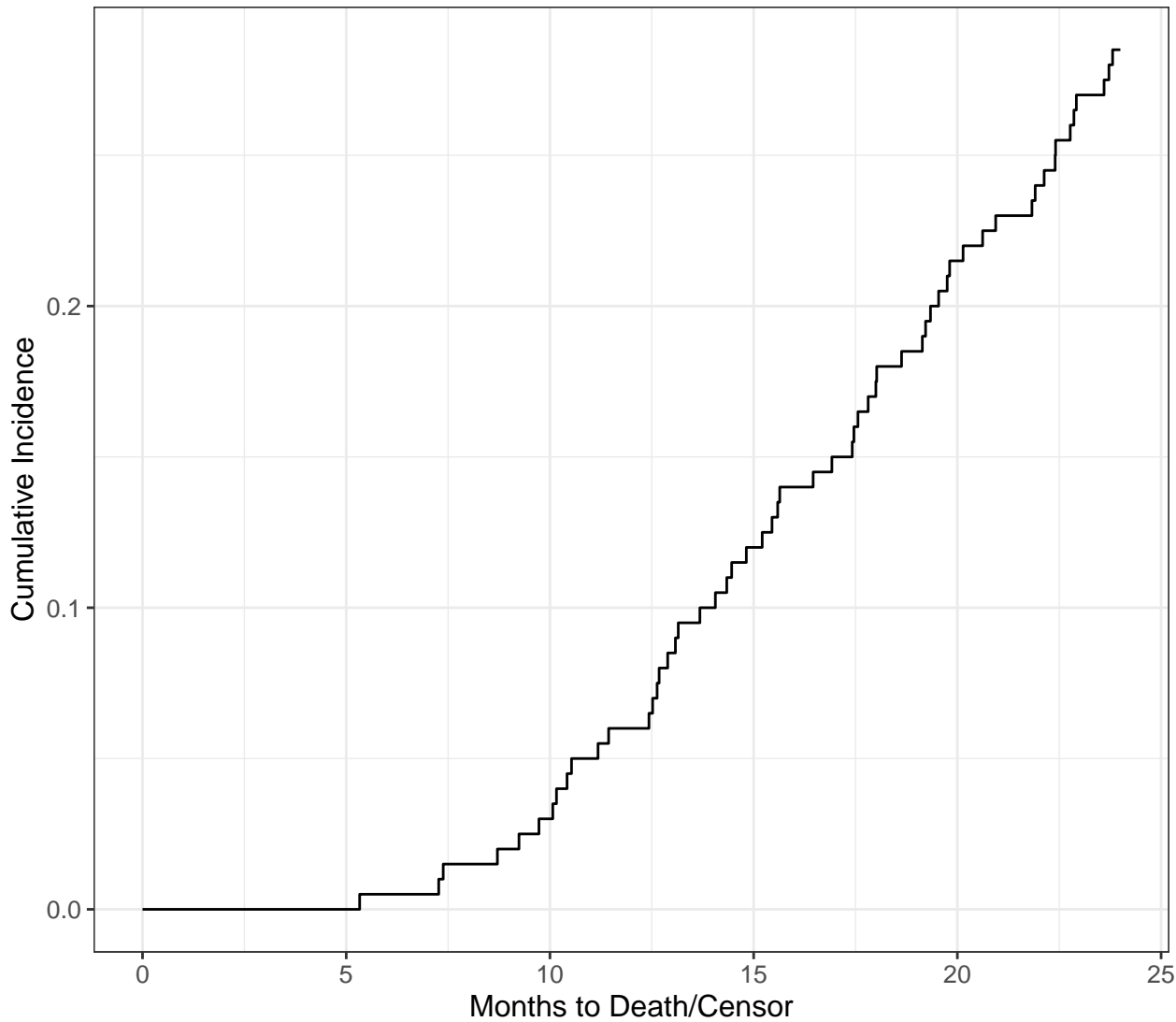
Asymptomatic  
 Asymptomatic and ambulatory

Male, In bed <50% of the day  
 Male, In bed > 50% of the day

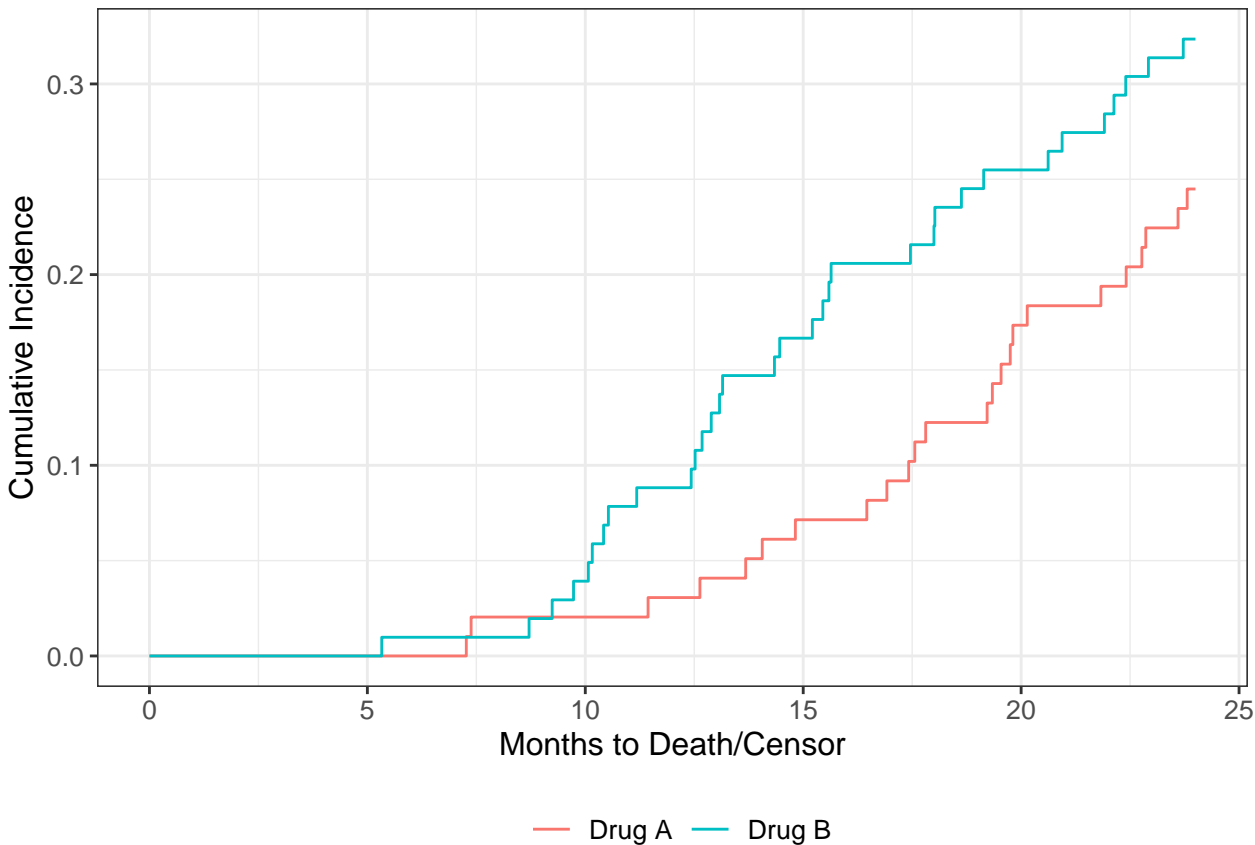
Female, Asymptomatic  
 Female, Symptomatic and ambulatory

Female, Asymptomatic and ambulatory  
 Female, Symptomatic

At Risk	227	87	24	3
Events	0	102	147	218



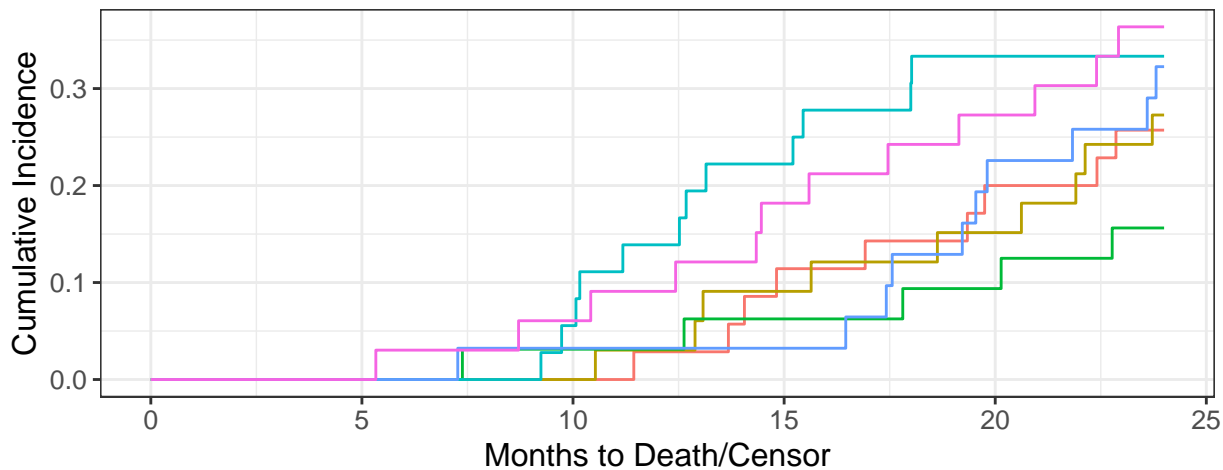
At Risk	200	199	189	158	116	0
Events	0	0	6	24	43	57



Drug A					
At Risk	98	97	94	83	61
Events	0	0	2	7	17

Drug B					
At Risk	102	102	95	75	55
Events	0	0	4	17	26



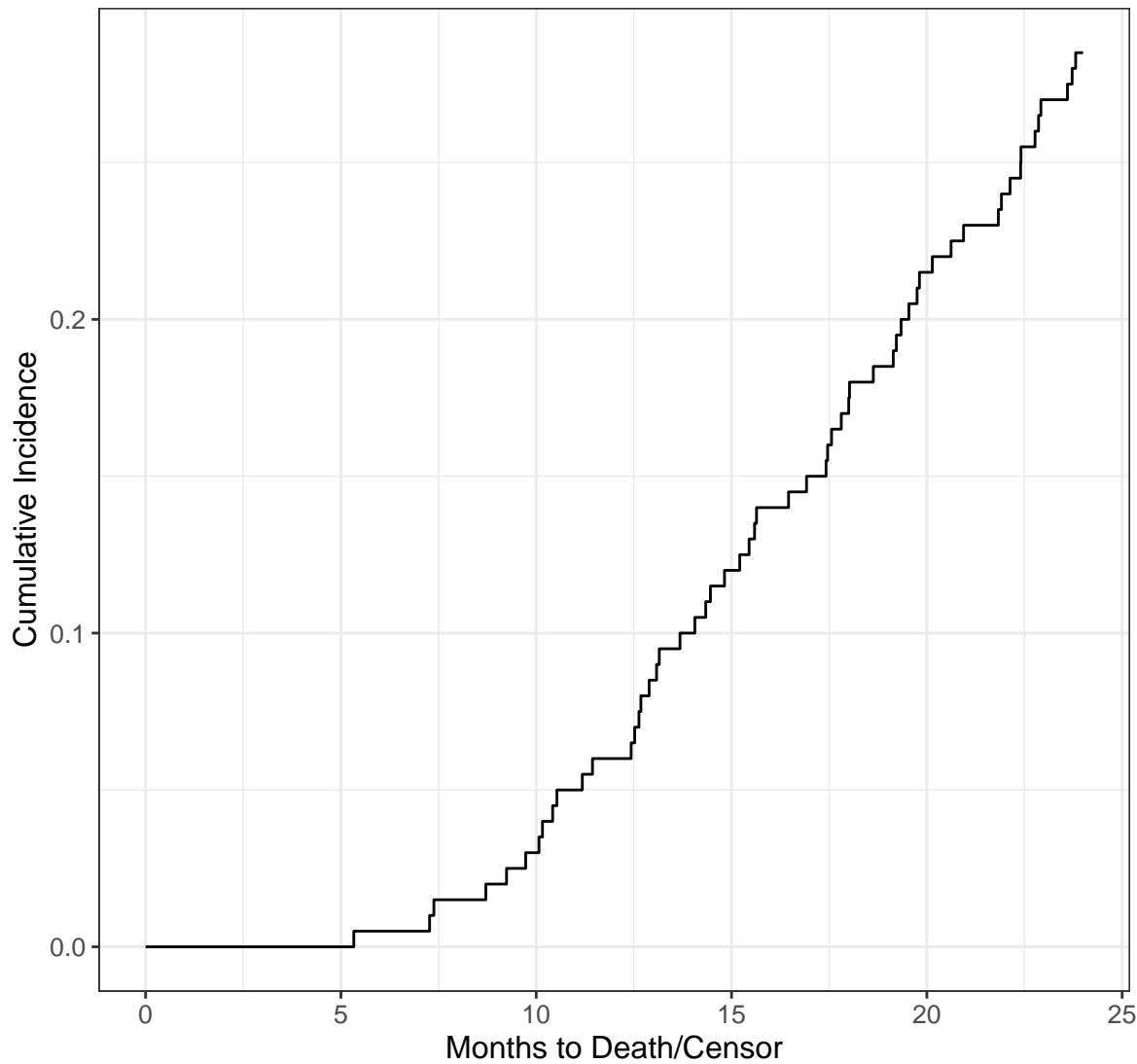
— Drug A, I    — Drug A, II    — Drug A, III  
— Drug B, I    — Drug B, II    — Drug B, III

### At Risk

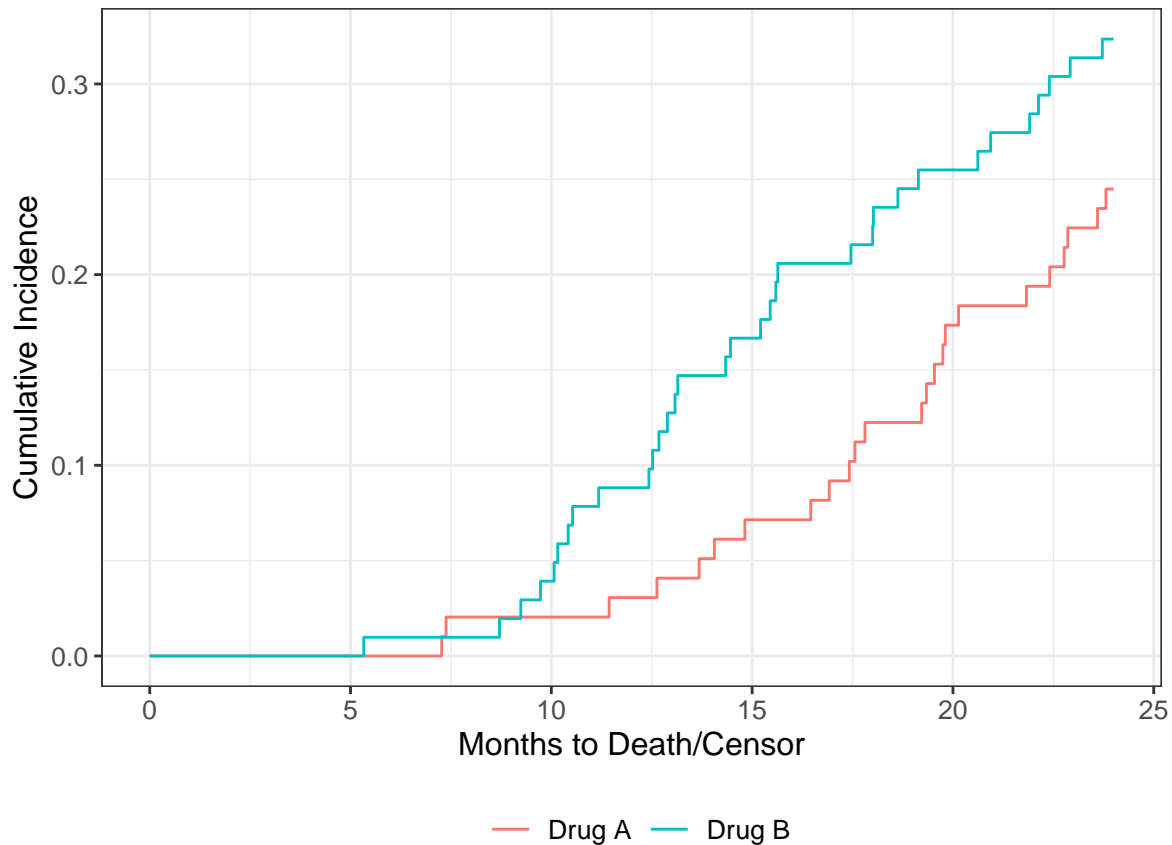
Drug A, I	35	35	35	30	22	0
Drug B, I	33	33	33	28	23	0
Drug A, II	32	32	30	27	23	0
Drug B, II	36	36	32	23	17	0
Drug A, III	31	30	29	26	16	0
Drug B, III	33	33	30	24	15	0

### Events

Drug A, I	0	0	0	4	7	9
Drug B, I	0	0	0	3	5	9
Drug A, II	0	0	1	2	3	5
Drug B, II	0	0	2	8	12	12
Drug A, III	0	0	1	1	7	10
Drug B, III	0	0	2	6	9	12



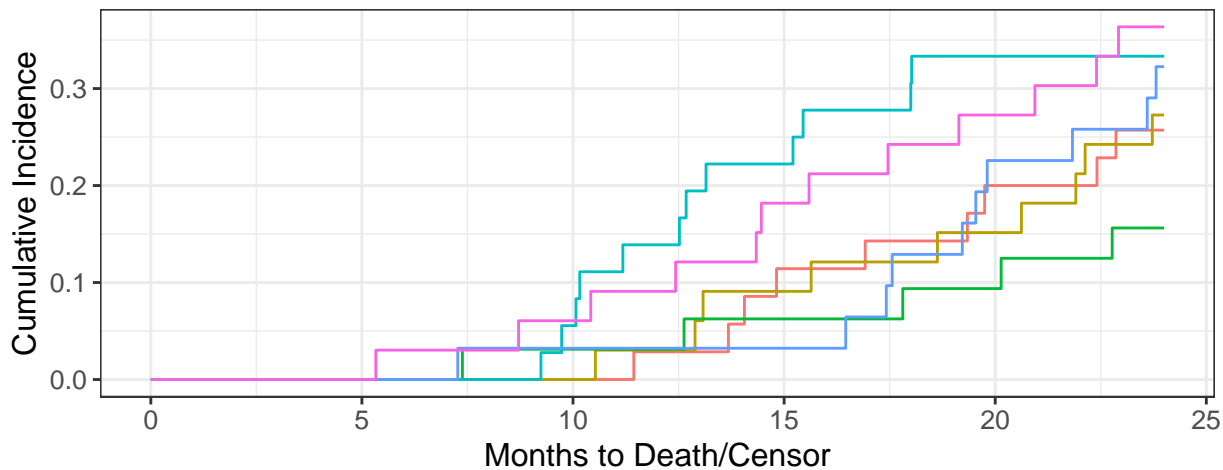
At Risk	200	199	189	158	116	0
CUM EVENTS	0	0	6	24	43	57



Drug A						
At Risk	98	97	94	83	61	0
CUM EVENTS	0	0	2	7	17	24

Drug B						
At Risk	102	102	95	75	55	0
CUM EVENTS	0	0	4	17	26	33



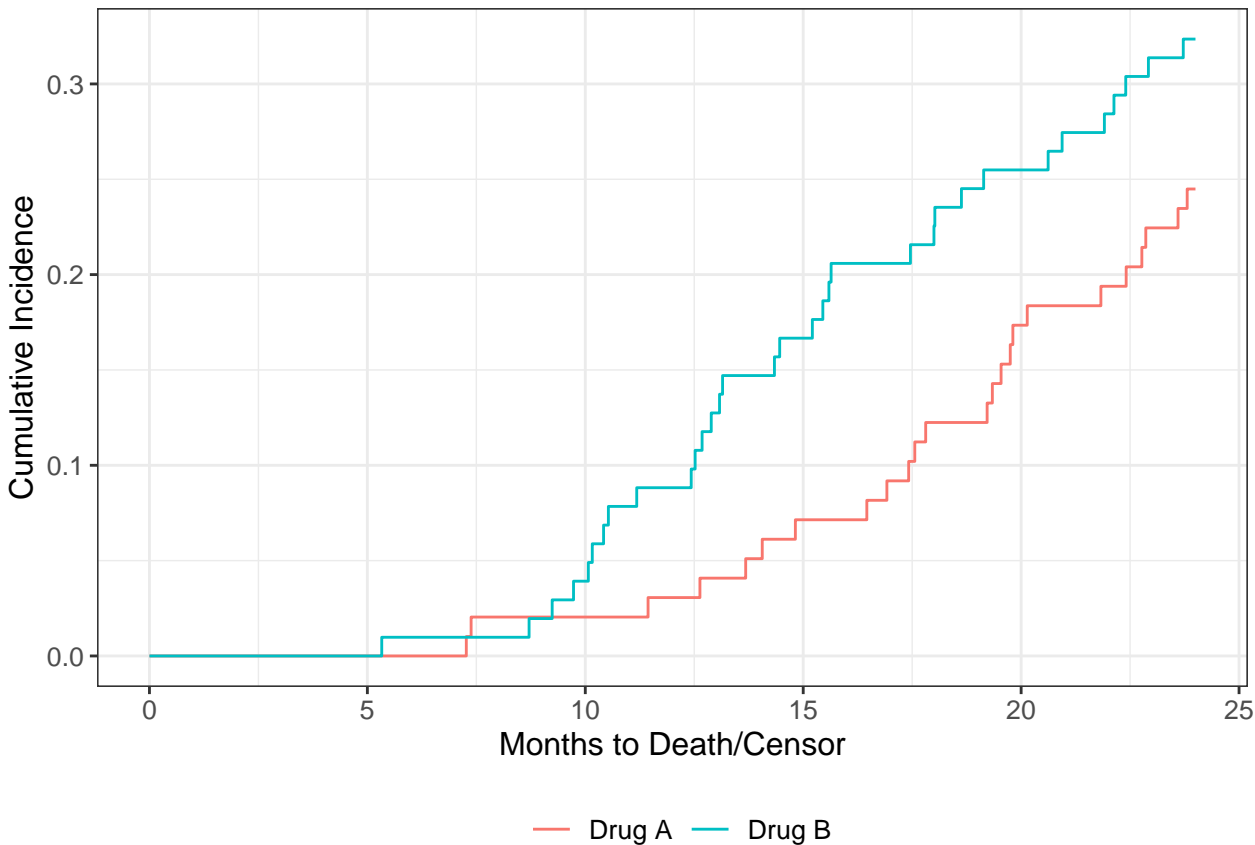


At Risk

Drug A, I	35	35	35	30	22	0
Drug B, I	33	33	33	28	23	0
Drug A, II	32	32	30	27	23	0
Drug B, II	36	36	32	23	17	0
Drug A, III	31	30	29	26	16	0
Drug B, III	33	33	30	24	15	0

CUM EVENTS

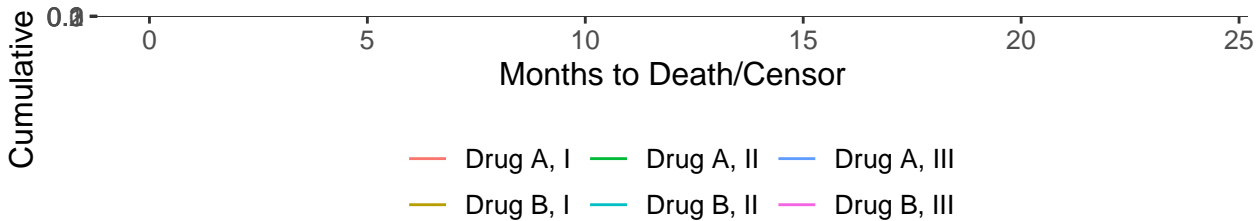
Drug A, I	0	0	0	4	7	9
Drug B, I	0	0	0	3	5	9
Drug A, II	0	0	1	2	3	5
Drug B, II	0	0	2	8	12	12
Drug A, III	0	0	1	1	7	10
Drug B, III	0	0	2	6	9	12



Drug A					
At Risk	98	97	94	83	61
Events	0	0	2	7	17

Drug B					
At Risk	102	102	95	75	55
Events	0	0	4	17	26



### Drug A, I

At Risk	35	35	35	30	22	0
Events	0	0	0	4	7	9

### Drug B, I

At Risk	33	33	33	28	23	0
Events	0	0	0	3	5	9

### Drug A, II

At Risk	32	32	30	27	23	0
Events	0	0	1	2	3	5

### Drug B, II

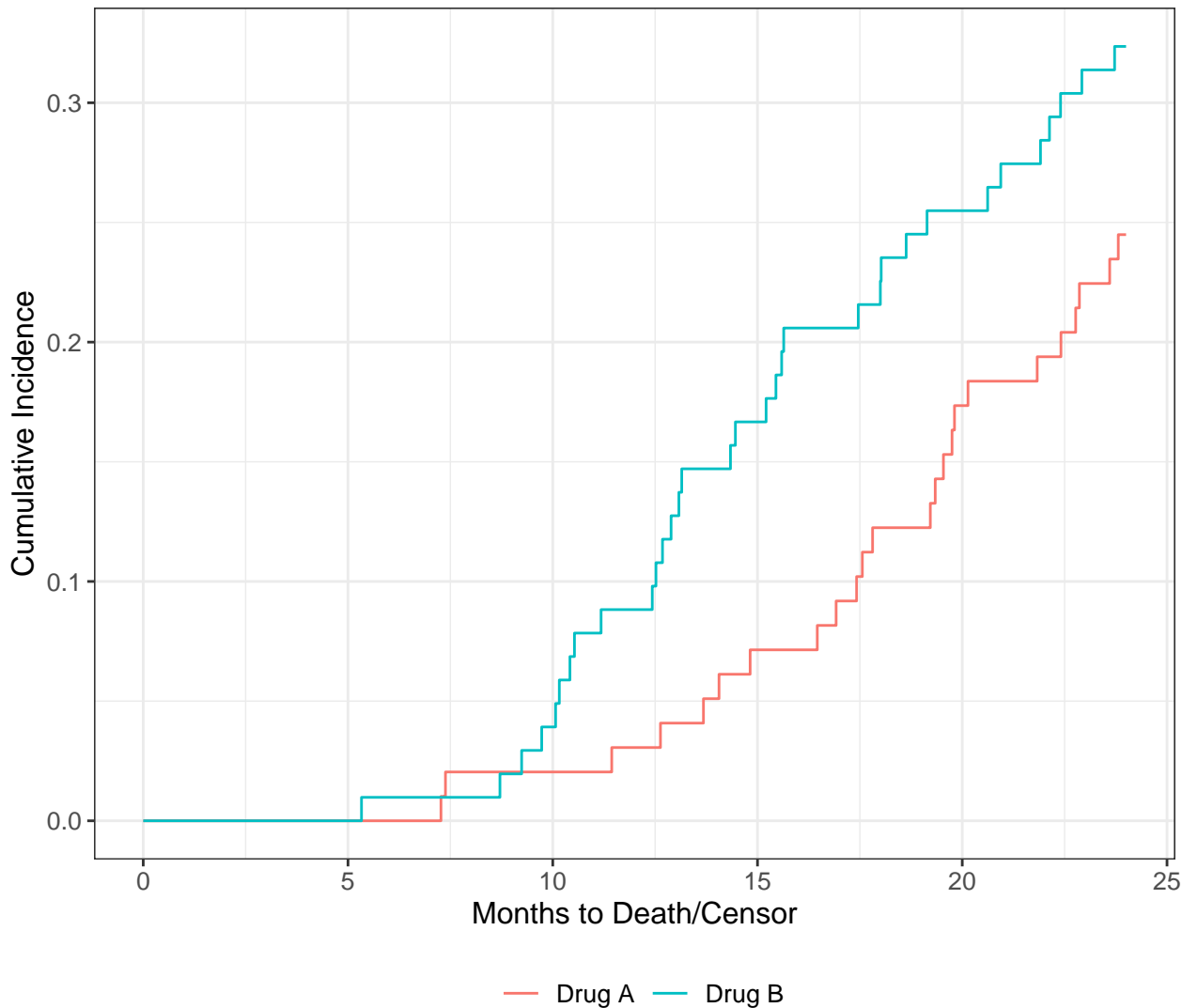
At Risk	36	36	32	23	17	0
Events	0	0	2	8	12	12

### Drug A, III

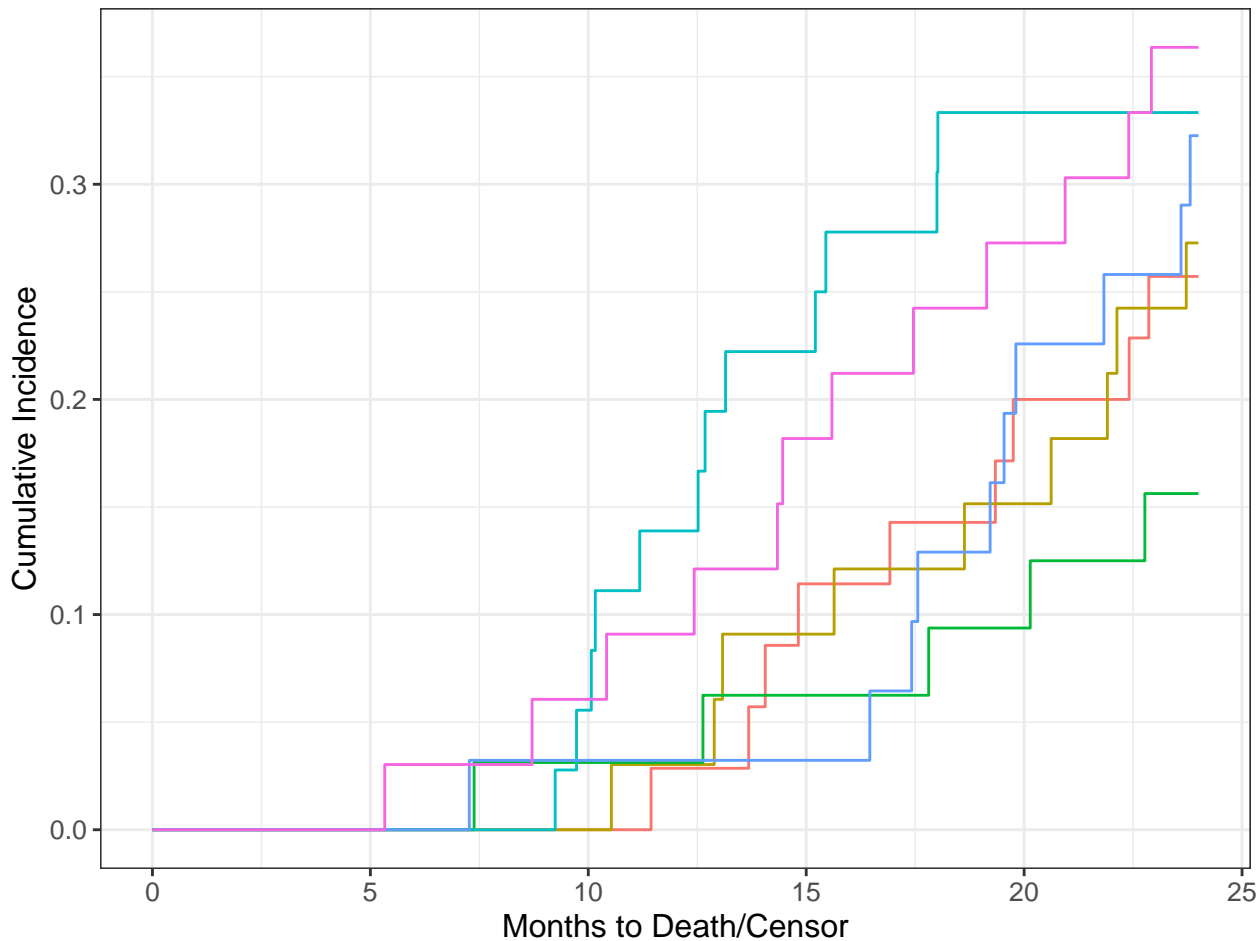
At Risk	31	30	29	26	16	0
Events	0	0	1	1	7	10

### Drug B, III

At Risk	33	33	30	24	15	0
Events	0	0	2	6	9	12

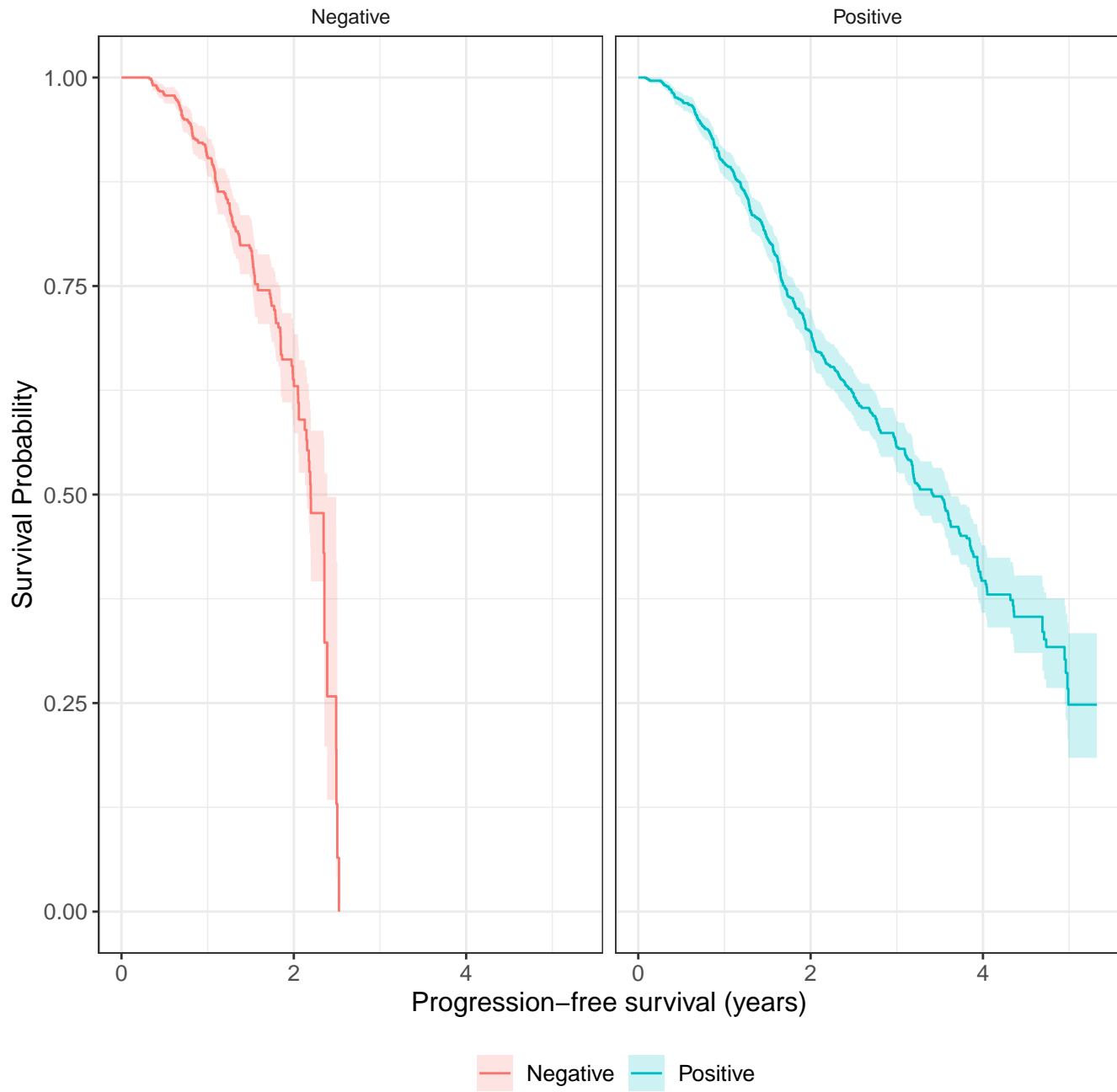


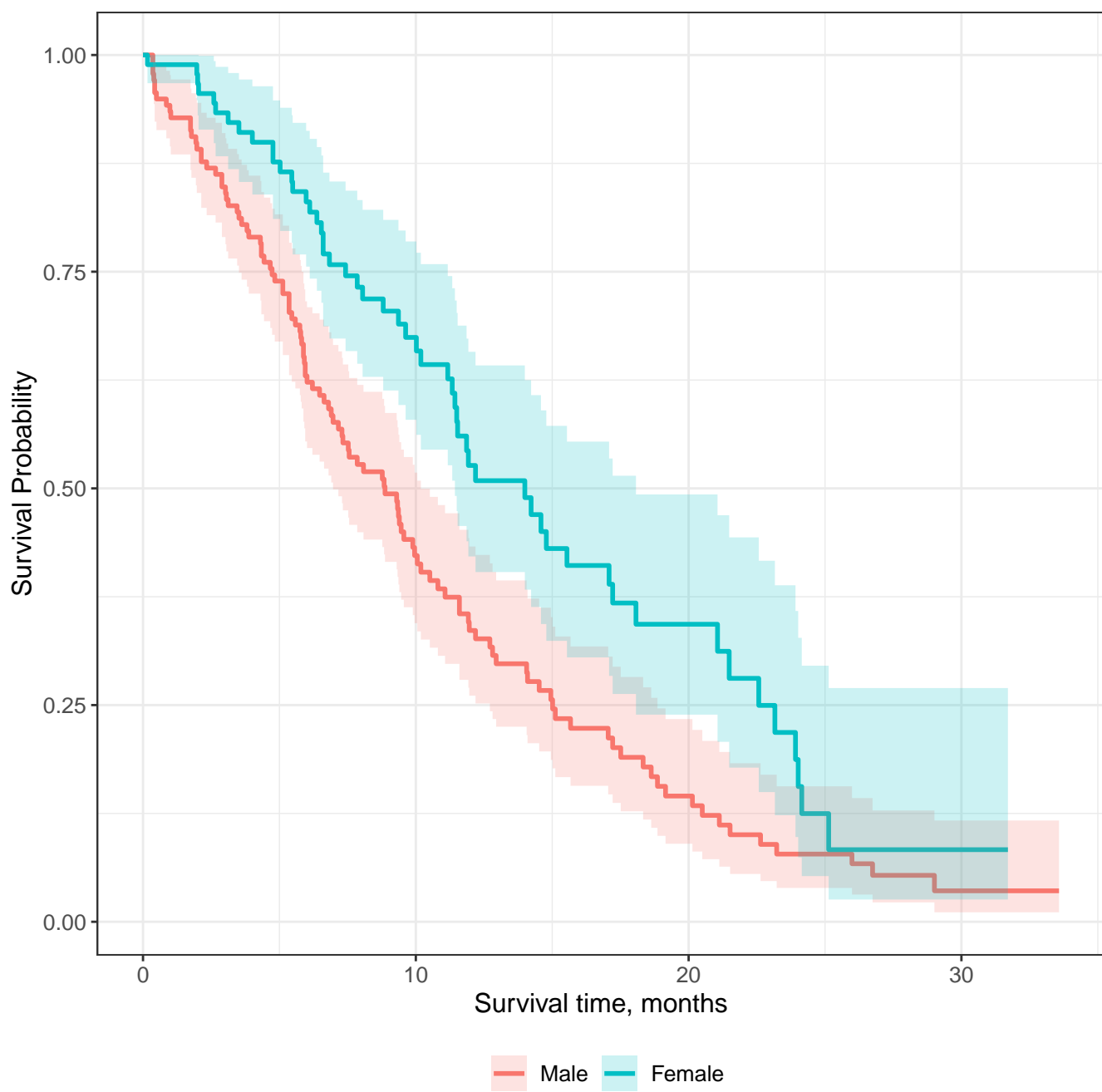
At Risk	200	199	189	158	116	0
Events	0	0	6	24	43	57

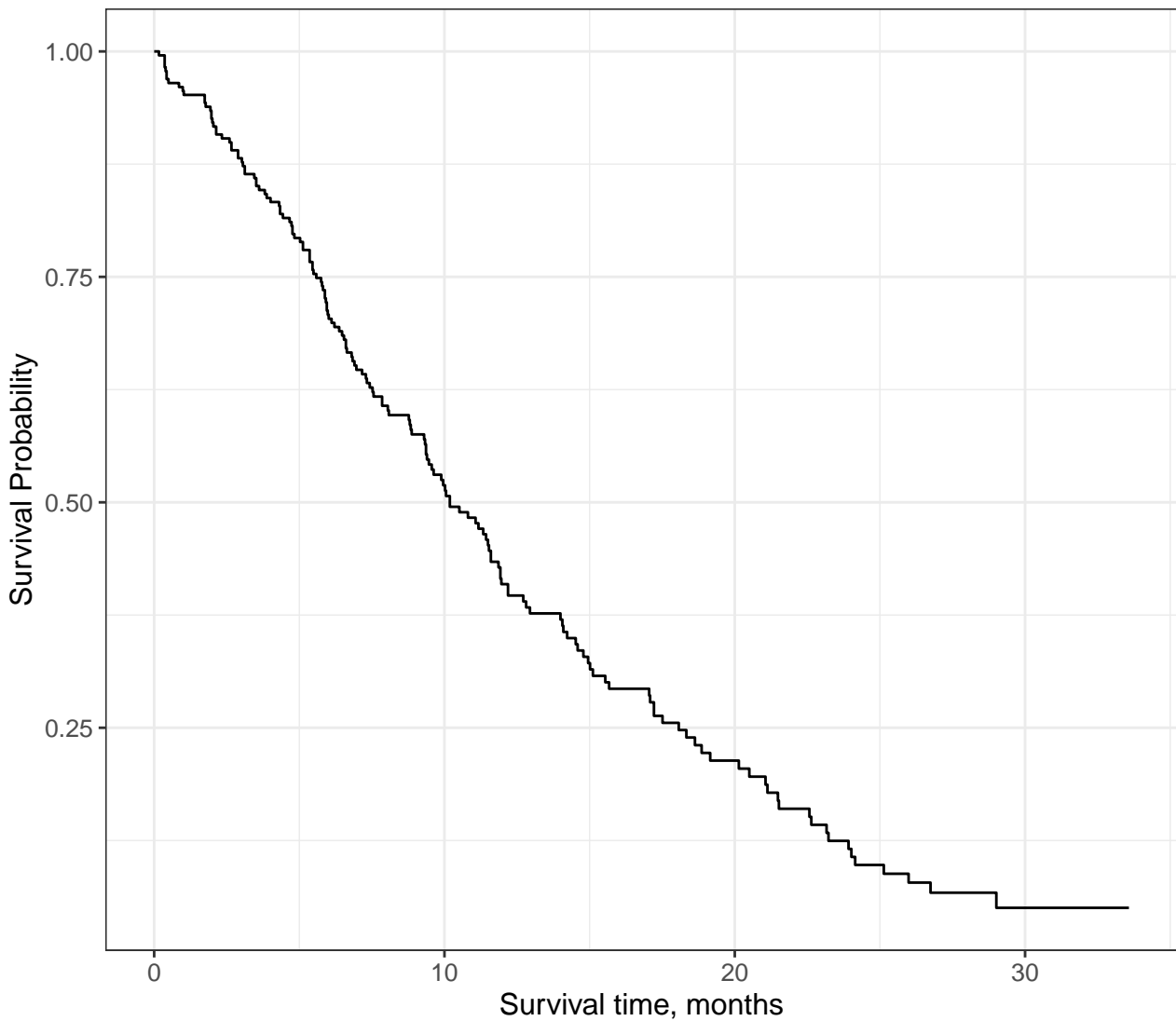


— Drug A, I    — Drug A, II    — Drug A, III  
— Drug B, I    — Drug B, II    — Drug B, III

At Risk	200	199	189	158	116	0
Events	0	0	6	24	43	57







At Risk	228	87	24	3
Events	0	103	148	165